



Harvey Roofing Products

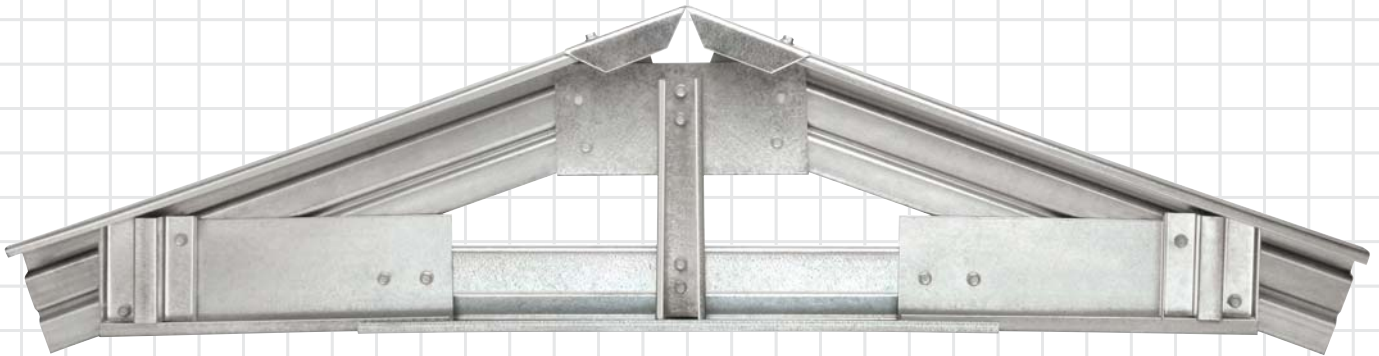
THE LIGHT SIDE OF CONSTRUCTION



**HARVEY ROOF TILES COMBINE THE BEST OF BOTH WORLDS...
MACSTEEL LSF (LIGHT STEEL FRAME)**

LIGHT GAUGE STEEL

Combine the best of both worlds...



ADVANTAGES OF LIGHT GAUGE STEEL OVER OTHER SYSTEMS

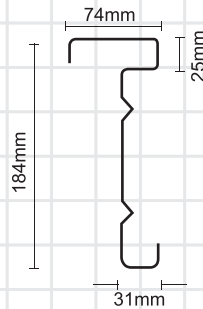
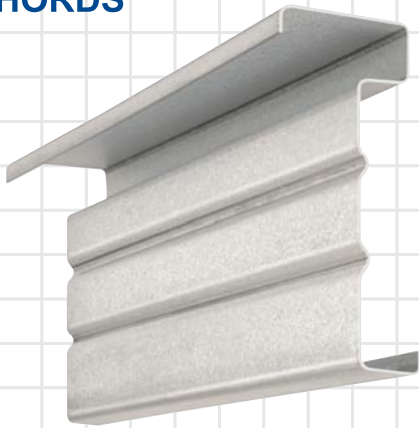
This lightweight profile system ensures straight and accurate members, whereas timber has several natural flaws. Further benefits are that the roofs are a third lighter than the equivalent in timber, which is a major factor for delivering a roof structure into Africa where transport and handling plays an important role. Light weight trusses are designed to be spaced at between 1200mm and 1400mm apart, depending on the type of covering therefore the need for a crane is seldom necessary, compared to heavier hot-rolled structural steel.

Light weight trusses can be assembled on site with a timber jig and a screw-gun or drill to drive home the screws. Trusses delivered over long distances, is easier to transport and do not take up unnecessary space. Thus assembly will be best carried out on site. The use of the jig on site ensures uniformity of all identical trusses.

The low mass per m² (between 2-10kg) of this roofing system ensures savings on the supporting structure as well as on transportation and erection costs whilst also being vermin proof and non-combustible.

Large sections of the roof can simply be pre-assembled on the ground and hoisted into position on the walls – making this one of the most viable systems with a large range of applications up to a clear span of 40m.

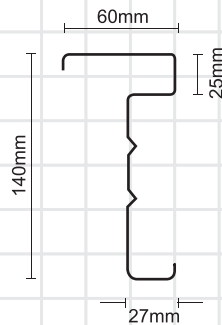
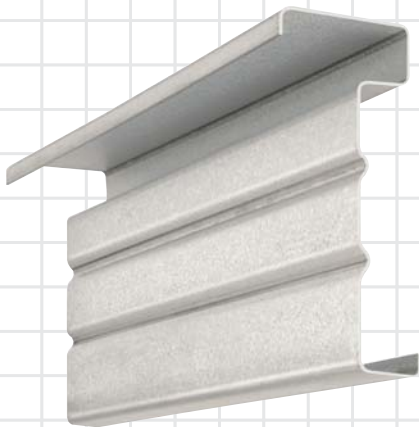
CHORDS



USC 184 x 1.9

184mm chord in 1.9mm steel
(suitable for very large spans/girders)

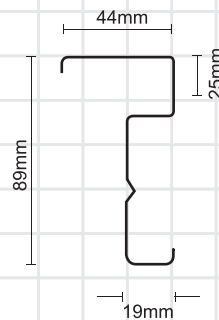
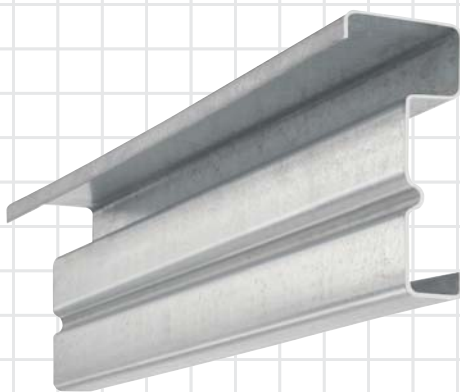
Weight: 5.29kg/m



USC 140 x 1.2 / 1.6

140mm chord in 1.2mm or 1.6mm steel
(suitable for large spans/girders)

Weight: 1.2mm: 2.51kg/m
1.6mm: 2.24kg/m



USC 89 x 1.0 or 1.2

89mm chord in 1.0mm or 1.2mm steel

Weight: 1.0mm: 1.44kg/m
1.2mm: 1.73kg/m



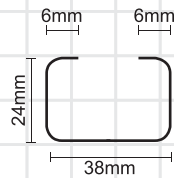
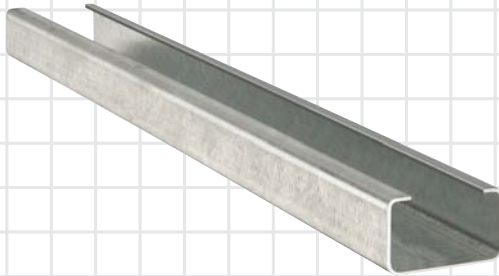
USC 64 x 0.8

64mm chord in 0.8mm steel

Weight: 0.93kg/m

LIGHT GAUGE STEEL

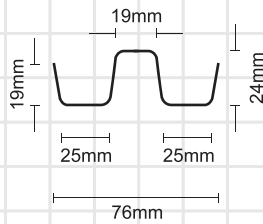
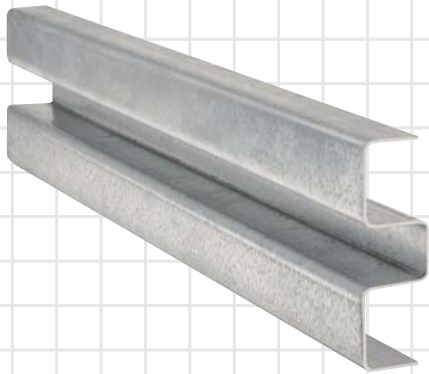
WEBS



USW 38 x 0.8

38mm web in 0.8mm steel

Weight: 0.55kg/m

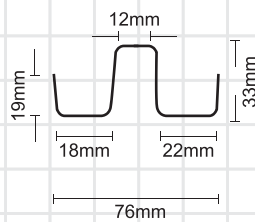
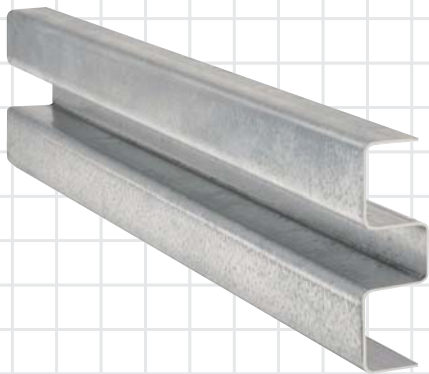


USW 76 x 0.8 or 1.2

76mm web in 0.8mm or 1.2mm steel

Weight: 0.8mm: 0.73kg/m

1.2mm: 1.38kg/m



USW 76 x 1.6

76mm web in 1.6mm steel

Weight: 1.8kg/m

LIGHT GAUGE STEEL



WHY USE LIGHT GAUGE STEEL TRUSSES?

Is your roof too large to be done in pre-fabricated timber or are you shipping roofs into Africa and paying dearly for transport? You should consider to supply low-cost roofs or simply prefer non-combustible roof structures. Whatever your requirement – Light Gauge Steel offers the solution!

Mac Light Gauge Steel trusses can be supplied in 'kit-form' (low-cost housing or other remote projects) whereby trusses are assembled on site contributing to local skills transfer and employment, or in prefabricated form ready for installation on the roof.

Advantages of the light gauge steel truss system:

- Elegant simple system, with all members straight and true for a level roof
- Span capability from small low-cost to large 40m clear span commercial structures
- Longevity of product due to galvanized coating plus inherent properties of non-combustibility, resistance to borer and fungus attack
- Lower weight reduces transportation costs and improves handling and erection
- Ease of truss manufacture with screws and electric fixing tool directly on site or in factory conditions



LIGHT GAUGE STEEL

BASIC TOOLS



FIXING SCREWS AND SOCKETS



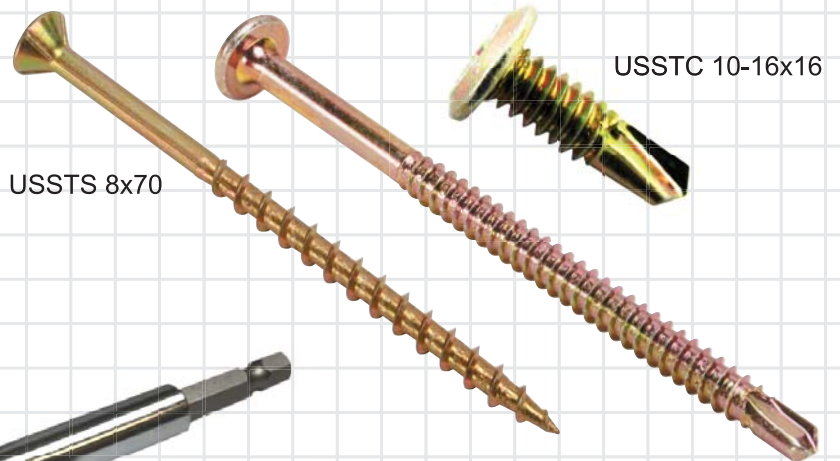
USMAG1/4 and USMAG5/16 fittings



USS Roof Zip M6x65

USSC@ 12x20

USSC2 08x13



USSTS 8x70

USSTC 10-16x16



Roof tile screw mag socket

TOP HAT PROFILES

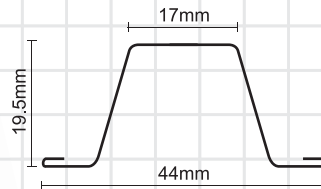
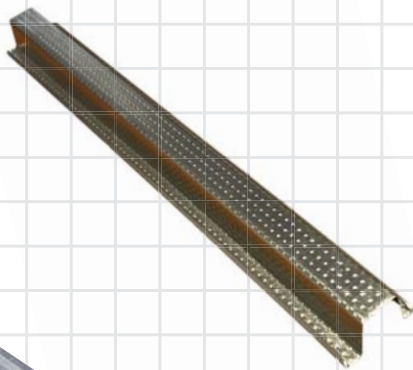
Light Gauge Steel Top-Hat profiles are steel hat channel profiles, manufactured from galvanized steel for superior corrosion resistance. These cost effective steel battens & purlins are compatible with timber and steel trusses for either tile or metal sheeting applications.

Top-Hat Profiles can be used as a batten, purlin, tilting fillet, ceiling bracing, runner, web cross brace or diagonal brace in both timber and steel roof structures.

In addition to being easy to transport (due to its lightweight properties), Top-Hat profiles are packaged in bundles of 10, enabling space saving storage and ease of handling. Top-Hat profiles are always straight ensuring a true and level roof.

Why Light Gauge Top-Hat profiles?

- Available in standard lengths or can be cut to length (dependent on quantity)
- Less wastage as it cannot be used for fire wood (non-combustible)
- Can be used with both timber and steel roof trusses
- Labour saving in loading and offloading time
- Galvanized for superior corrosion resistance
- No treatment required (resistant to fungus and borer attacks)
- Does not warp, so members are always straight and true
- Transport and storage space saving, e.g. bundle of 10 x 25mm MiTek Top-Hat profiles is the same size as one 38x38mm timber batten
- Simplified and faster fixing to roof trusses as no purlin clips are used and requires no slitting of under sheeting membrane

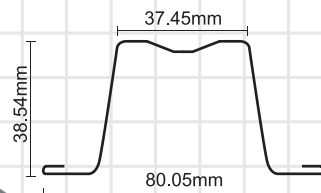


20mm

USCEIL - 0.35mm

Usage:

- Exclusively as ceiling bracing - 1400mm max truss spacing

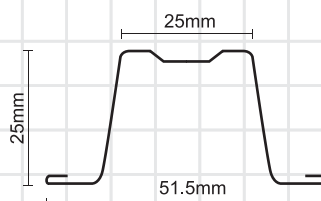
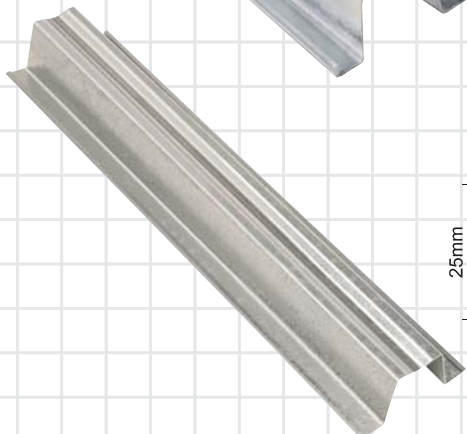


40mm

USP0.5G - 0.5mm

Usage:

- As a tilting fillet or tiled roofs - 1100mm max truss spacing
- As a purlin on sheeted or metal tile roofs - 1400mm max truss spacing
- As a runner or diagonal brace on all roofs - 1400mm max truss spacing



25mm

USBAT25G - 0.5mm

Usage:

- As a tile batten - 1100mm max truss spacing
- As web cross bracing (on web runners) - 830mm max truss spacing
- As a runner (on web or bottom chord) - 1400mm max truss spacing

LIGHT GAUGE STEEL

LOW COST HOUSING

Do you want to supply low cost roofs or simply prefer non-combustible roof structures? MacLSF trusses can be supplied in “kit-form” (affordable housing or other remote projects) whereby trusses are assembled on site (contributing to local skills transfer and employment), or in a pre-fabricated form, ready for installation on the roof.

So why use MacLSF for Affordable Housing?

- The demand for purlin rafter and sheeting style roofs has declined
- Communities require structures that can support concrete roof tiles and solar geysers
- Communities require structures that can enable a ceiling to be added at a later date
- Communities want a finished product that is guaranteed for design and workmanship

MacLSF offers the following unique advantages:

- Perfectly level roofs as steel does not warp
- 100% non-combustible
- Fully recyclable materials
- Reduced self-weight of the roof -assists the supporting structure

Using a network of steel roof truss manufacturers, Macsteel is now best placed to supply roof truss components to any site in Southern Africa, either as a pre-manufactured roof truss or as individually labelled components for on-site assembly.



LIGHT GAUGE STEEL

For low maintenance, durable and safe roofing solution contact us:

Tel: 011 741 5600

email: info@hrp.co.za

www.harveyroofingproducts.co.za / www.macsteel.co.za



**Harvey
Roofing Products**

